



# GAT MONTHLY MEMBERSHIP PROGRESS REPORT

Results as of: 4/30/2023

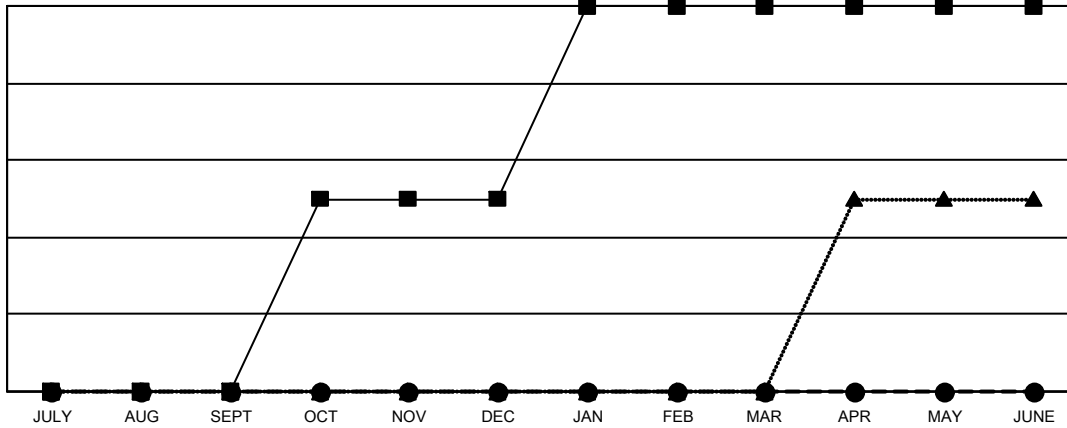
Multiple District 60

LOCATION: GUYANA

| Clubs                 |               |           |               |
|-----------------------|---------------|-----------|---------------|
| RESULTS FOR 2022-2023 |               |           |               |
| QUARTER               | NEW CLUB GOAL | NEW CLUBS | DROPPED CLUBS |
| JULY/AUG/SEPT         | 0             | 0         | 0             |
| OCT/NOV/DEC           | 1             | 0         | 1             |
| JAN/FEB/MAR           | 1             | 0         | 1             |
| APR/MAY/JUNE          | 0             | 0         | 0             |

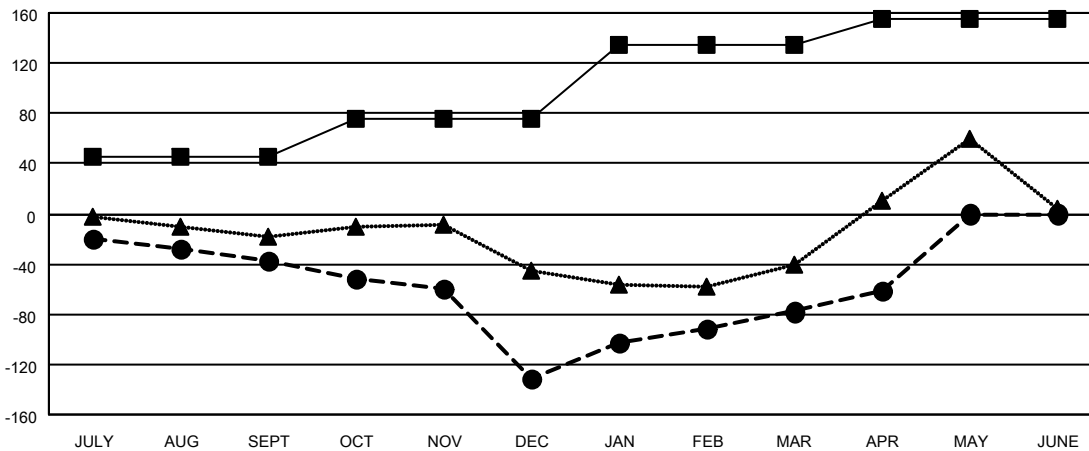
| Members               |                        |                      |  |
|-----------------------|------------------------|----------------------|--|
| RESULTS FOR 2022-2023 |                        |                      |  |
| QUARTER               | MEMBER GROWTH NET GOAL | MEMBER GROWTH ACTUAL | DROPPED MEMBERS ACTUAL (including transfers) |
| JULY/AUG/SEPT         | 45                     | 28                   | 63   |
| OCT/NOV/DEC           | 30                     | 23                   | 112  |
| JAN/FEB/MAR           | 60                     | 139                  | 39   |
| APR/MAY/JUNE          | 20                     | 50                   | 32   |

GOALS AND ACTUAL NEW CLUBS CUMULATIVE



- CURRENT YEAR GOALS FOR NEW CLUBS
- CURRENT YEAR ACTUAL NEW CLUBS
- ▲- LAST YEAR ACTUAL NEW CLUBS

GOALS AND ACTUAL MEMBERS CUMULATIVE



- MEMBER GROWTH NET GOAL
- MEMBER GROWTH ACTUAL
- ▲- LAST YEAR MEMBERSHIP ACTUAL

|                        |            |
|------------------------|------------|
| DROPPED CLUBS: 2       |            |
| <b>DROPPED MEMBERS</b> |            |
| DECEASED               | 29         |
| CLUB CANCELLED         | 44         |
| OTHER                  | 173        |
| <b>TOTAL</b>           | <b>246</b> |

53 CLUBS OF 114 ADDED 1 OR MORE NEW MEMBERS

[CLICK HERE FOR CUMULATIVE MEMBERSHIP DATA](#)

| GENDER DISTRIBUTION             |                |
|---------------------------------|----------------|
| MALE                            | 1,502 (41.38%) |
| FEMALE                          | 2,127 (58.60%) |
| NON BINARY                      | 0 (0.00%)      |
| PREFER NOT TO ANSWER            | 1 (0.03%)      |
| TOTAL FAMILY UNIT MEMBERS       | 143            |
| FAMILY MEMBERS PAYING HALF DUES | 76             |